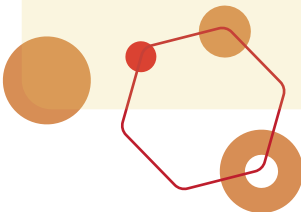


COPPER RODS AND BARS

LAROMET offers a wide range of hot extruded and cold drawn copper rods and bars. We are open to adapt our offer to fit customers needs. Due to their electrical and thermal conductivity, copper bars are mainly used in the electrical industry.

We have over 80 years of experience in the production of brass, bronze and copper semi-finished products. All the products offered by LAROMET are manufactured in ROMANIA, in our two production facilities located in Bucharest and Braşov.

- Production to the highest quality standards
- Fast offer
- Manufacturer prices
- Fast delivery directly from stock or on order
- Transport assured at request
- Technical consultancy



www.laromet.ro



We provide products and services at the highest quality standards to satisfy the most demanding customers requirements. Conformity of the management systems adopted by LAROMET (Quality, Environment, Health and Safety) is certified by Lloyd's Register Quality Assurance **Lloyd's Register Quality Assurance (LRQA)**.

COPPER RODS AND BARS



ALLOY STANDARDS AND SYMBOLS

Copper type		Standards	Applications
Chemical symbol	Numerical symbol		
Cu-ETP	CW004A	EN 12165	Mainly used for manufacturing of parts and components for electrical applications (electric power distribution lines, distribution panels, transformers etc.)
Cu-OF	CW008A	EN 13601	

SHAPES AND DIMENSIONS

Shape	Manufacturing Process	Dimensions	Temper
	Hot extruded	Diameter: > 80-140 mm	<p>M – hot extruded D – cold drawn</p> <p><u>Soft (annealed):</u> R200 / H035</p> <p><u>Half hard:</u> R230 / H065 R250 / H065</p> <p><u>Hard:</u> R260 / H075 R280 / H085 R300 / H085</p>
	Cold drawn	Diameter: 5-80 mm	
	Hot extruded	Side: > 60-100 mm	
	Cold drawn	Side: 5-60 mm	
	Hot extruded	Across flat: > 60-100 mm	
	Cold drawn	Across flat: 5-60 mm	
	Hot extruded	Width: 60-130 mm Thickness: 30-70 mm Section area: > 3000-9000 mm²	
	Cold drawn	Width: 5-125 mm Thickness: 2.5-30 mm Section area: < 3000 mm² Width / thickness ratio: max.15	