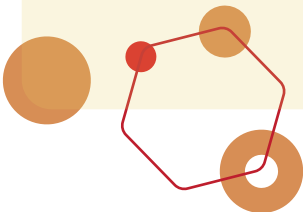


# ROUND COPPER TUBES

Due to having a very good thermal conductivity and very good cold workability, copper tubes are used in various industries.

**We have over 80 years of experience in the production of brass, bronze and copper semi-finished products. All the products offered by LAROMET are manufactured in ROMANIA, in our two production facilities located in Bucharest and Braşov.**

- Production to the highest quality standards
- Fast offer
- Manufacturer prices
- Fast delivery directly from stock or on order
- Transport assured at request
- Technical consultancy



[www.laromet.ro](http://www.laromet.ro)



We provide products and services at the highest quality standards to satisfy the most demanding customers requirements. Conformity of the management systems adopted by LAROMET (Quality, Environment, Health and Safety) is certified by Lloyd's Register Quality Assurance **Lloyd's Register Quality Assurance (LRQA)**.

# ROUND COPPER TUBES



## ALLOY STANDARDS AND SYMBOLS

Alloy		Standards	Applications
Chemical symbol	Numerical symbol		
Cu-ETP	CW004A	EN 12449	Water distribution pipelines Elements of connection (cable lugs)
Cu-OF	CW008A	EN 13600	Electric heating elements Machine engineering industry

## SHAPES AND DIMENSIONS

Shape	Manufacturing Process	Dimensions	Temper
●	Hot extruded	Outer diameter: <b>70-140 mm</b> Inner diameter: <b>30-90 mm</b> Wall thickness: <b>&gt; 20-30 mm</b> Dext./ wall thickness = <b>min.3</b>	D – cold drawn  Soft (annealed): <b>R200 / H035</b>  Half hard: <b>R250 / H065</b>  Hard: <b>R290 / H090</b>
	Cold drawn	Outer diameter: <b>21-120 mm</b> Inner diameter: <b>18-85 mm</b> Wall thickness: <b>1.5-20 mm</b>	