

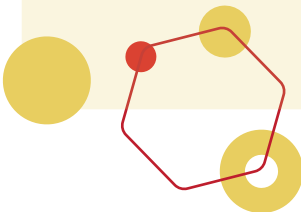


HORIZONTAL CONTINUOUS CAST (AND TURNED) ROUND BRASS TUBES

LAROMET produces horizontal continuous cast (and turned) round brass tubes in a wide range of sizes. These have a high resistance to mechanical stress and high resistance to corrosion.

We have over 80 years of experience in the production of brass, bronze and copper semi-finished products. All the products offered by LAROMET are manufactured in ROMANIA, in our two production facilities located in Bucharest and Braşov.

- Production to the highest quality standards
- Fast offer
- Manufacturer prices
- Fast delivery directly from stock or on order
- Transport assured at request
- Technical consultancy



www.laromet.ro



We provide products and services at the highest quality standards to satisfy the most demanding customers requirements. Conformity of the management systems adopted by LAROMET (Quality, Environment, Health and Safety) is certified by Lloyd's Register Quality Assurance **Lloyd's Register Quality Assurance (LRQA)**.

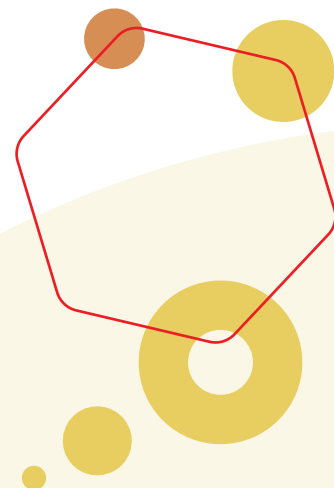
HORIZONTAL CONTINUOUS CAST (AND TURNED) ROUND BRASS TUBES



DIMENSIONS AND STANDARDS

Correspondent alloys		Standard, temper	Dimensions	Applications
Alloys as per EN standards	Alloys as per ASTM standards			
CC754S (CuZn39Pb1 Al-C)	_____	Continuous cast EN 1982 GC ASTM B505/B505M Mo7	Outer diameter: 150 – 250 mm Wall thickness: 15-35 mm	Pistons for hydraulic pumps, bearings, other parts resistant to high mechanical stress and in corrosive environments, including sea water
CC762S (CuZn25Al5 Mn4Fe3-C)	C86200 (CuZn25Al4 Mn4Fe3) C86300 (CuZn25Al6 Mn4Fe3)			
CC764S (CuZn34Mn3 Al2Fe1-C)	_____			

By request, LAROMET can offer horizontal continuous cast (and turned) round tubes made of other brass types.



PRODUCTION & SALES CENTER RUDENI
21-25 MACULUI Street, RUDENI, ILFOV County
+40 727 334 518 / +40 727 334 396 / +40 21 208 56 08
sales@laromet.ro

PRODUCTION & SALES CENTER BRAȘOV
60 CARPAȚILOR Street, BRAȘOV, BRAȘOV County
+ 40 733 337 385 / + 40 722 257 714 / + 40 729 036 743
sales@laromet.ro